

Mono Strand Jacks - Front Gripping

Capacity 25 ton / Stroke 200 mm



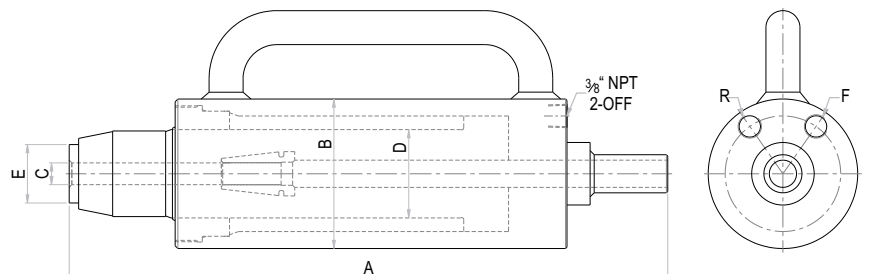
Mechanical Wedge Lock Arrangement



Hydraulic Wedge Lock Arrangement

Features / Application

- Easy to insert jack over strand in constricted space.
- Useful for removing slackness in long strands.



OSFG Series - **O** Orione **S** Single strand **FG** Front Gripping **12** Capacity - ton **200** Stroke - mm

Capacity (ton)	Capacity (kN)	Stroke (mm)	Model	Strand arrangement	Effective area (cm ²)	Oil cap. (cc)	Closed height with Mechanical wedge lock A (mm)	Closed height with Hydraulic wedge lock A (mm)	Cylinder OD B (mm)	C'hole dia. C (mm)	Ram dia. D (mm)	Nose dia. E (mm)	Wt. (Approx.) (kg.)
25	260	200	OSFG 25-200	05, 06	37.1	742	410	450	110	20	65	43	20



POWER PACK SPECIFICATION

Power pack Model	Motor (HP)	Oil tank capacity (liters)	Pump flow (l/min)	Max. working pressure (bar)	Weight (Approx.) (kg.)	Operation
OPU00230	2	20	1	700	80	Manual (Rotary DCV)

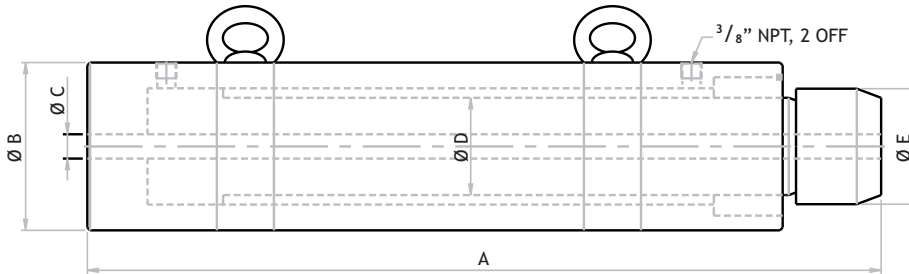
■ Higher capacity and customized solutions on request. ■ Specifications are subject to change due to continual improvement.
 ■ Capacity and Stroke specified are maximum safe limits. As safe practice, use at 80% of rating.

Mono Strand Jacks - Rear Gripping

Capacity 20 - 30 ton / Stroke 750 - 1000 mm

Features / Application

- Long strokes for stressing long strand in one pull.



OSRG Series - **O** Orione **S** Single strand **RG** Rear Gripping **20** Capacity - ton **1000** Stroke - mm

Capacity (ton)	Capacity (kN)	Stroke (mm)	Model	Strand arrangement	Effective area (cm ²)	Oil cap. (cc)	Closed height A (mm)	Cylinder OD B (mm)	C'hole dia. C (mm)	Ram dia. D (mm)	Nose dia. E (mm)	Wt. (Approx.) (kg.)
20	204	1000	OSRG 20-1000	05,06	97.1	9710	1330	164	20	90	95	168
25	255	750	OSRG 25-750	05,06	46.3	3475	1046	138	20	80	95	110
30	316	1000	OSRG 30-1000	05,06	90.3	9035	1280	180	75	120	-	182



POWER PACK SPECIFICATION

Power pack Model	Motor (HP)	Oil tank capacity (liters)	Pump flow (l/min)	Max. working pressure (bar)	Weight (Approx.) (kg.)	Operation
OPU00308	3	40	1.5	700	118	Manual (Rotary DCV)

Higher capacity and customized solutions on request. Specifications are subject to change due to continual improvement. Capacity and Stroke specified are maximum safe limits. As safe practice, use at 80% of rating.